



# Light Industrial Pressure Gauges

Our Range of Light Industrial Pressure Gauges  
provide economical, reliable service in a wide variety of applications where the medium will not  
attack brass or phosphor bronze.



## Our range of Light Industrial pressure gauges offers superior quality & performance at an affordable price

The Floyd range of Light Industrial gauges are intended for general Industrial conditions, used with pressure or vacuum applications where the measured medium does not corrode brass. These gauges cover a wide variety of ranges from full vacuum to 40,000 kPa (6,000 psi) and are available in bottom, rear or surface connections, with nominal sizes of 50, 63, 100 and 150mm.

This range of Floyd Pressure Gauges combines an aesthetic design offering reliability and performance for light industrial applications, and is an ideal solution for general pressure measurement.

### Features

- Supplied Dry Only
- Suitable for non-clogging and non-corroding media
- Nominal sizes (mm) 50, 63, 100, 150
- IP52 Degree of Protection
- Conforms to AS1349-1986

### Applications

- Plumbing
- Heating
- Air Conditioning
- Compressors
- Water Tanks
- Regulators
- Hydraulics
- OEM



### Specifications

#### Range

- -100 - 0 kPa to 0 - 40,000 kPa
- Steel case Dual kPa/psi as Standard
- Brass case Single kPa as Standard

#### Case

- Black Painted Steel (NS 50 & 63mm)
- Brass (NS 63, 100 & 150mm)

#### Dial

- Aluminum White face with black & red printing

#### Accuracy

- $\pm 1.0\%$  of full scale (NS 100 & 150mm)
- $\pm 3.0\%$  of full scale (NS 50 & 63mm)

#### Window

- Polycarbonate
- Glass

#### Temperature Range

- Ambient:  $-20^{\circ}\text{C}$  ...  $+60^{\circ}\text{C}$
- Process:  $+70^{\circ}\text{C}$  maximum

#### Movement

- Brass

#### Measuring Element

- Phosphor Bronze / Copper Alloy

#### Neck/Thread

- 1/8 BSPT Male / Brass (NS 50mm)
- 1/4 BSPT Male / Brass (NS 63mm)
- 3/8 BSPT Male / Brass (NS 100, 150mm)\*

\* Includes internal thread to mount restrictor screw for pulsation dampening

#### Pointer

- Aluminum, black

## Product Selection Data

Choose your product specifications and options below to configure your product



**Model**  — **Mounting**  — **Case**  — **Size**  — **Scale**  — **Range**

Model	Mounting		Case		Size		Scale		Range	
P	A	Direct Mount / Bottom Entry	S	Black Painted Steel	050	50mm	S	Single kPa	01	-100 - 0 kPa
			B	Brass	063	63mm	D	Dual kPa/psi	02	-100 -0- 60 kPa
	C	Direct Mount / Centre Rear Entry			100	100mm			03	-100 -0- 150 kPa
					150	150mm			04	-100 -0- 300 kPa
	S	Surface Mount / Bottom Entry (Back Flange)			05	-100 -0- 500 kPa				
					06	-100 -0- 900 kPa				
					09	0 - 100 kPa				
					10	0 - 160 kPa				
					11	0 - 250 kPa				
					12	0 - 400 kPa				
					13	0 - 600 kPa				
					14	0 - 800 kPa				
15					0 - 1000 kPa					
16					0 - 1600 kPa					
17	0 - 2500 kPa									
18	0 - 4000 kPa									
19	0 - 6000 kPa									
20	0 - 8000 kPa									
21	0 - 10000 kPa									
22	0 - 16000 kPa									
23	0 - 25000 kPa									
24	0 - 40000 kPa									

## Options/Accessories for PressureGauges

- Reducers/Adaptors
- Snubbers with Adjustment Screw
- Pigtail or U Syphons
- Perspex Window
- Ball Values
- Pulsation Dampener

## Customised Gauges

Floyd Australia can also manufacture gauges to customers’

### Options/Accessories for PressureGauges

- Reducers/Adaptors
- Snubbers with Adjustment Screw
- Pigtail or U Syphons
- Perspex Window
- Ball Values
- Pulsation Dampener

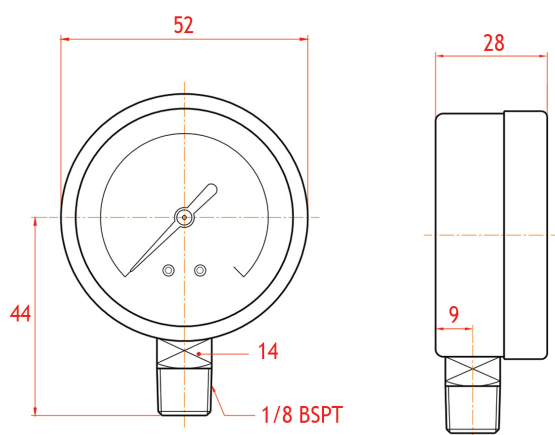
### Customised Gauges

Floyd Australia can also manufacture gauges to customers' requirements from different mounting styles, special dial markings, red lines, coloured sectors, purpose wording, company logos or non-standard thread connections.

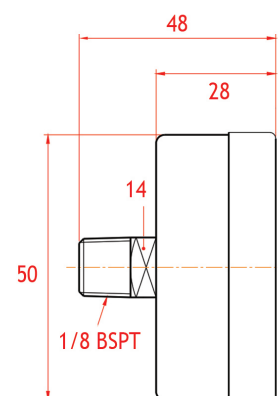
Enquire today to discuss your customized gauge requirements, with one of our friendly Customer Care team members

## Dimensional Data 50mm

### Direct mount Bottom entry

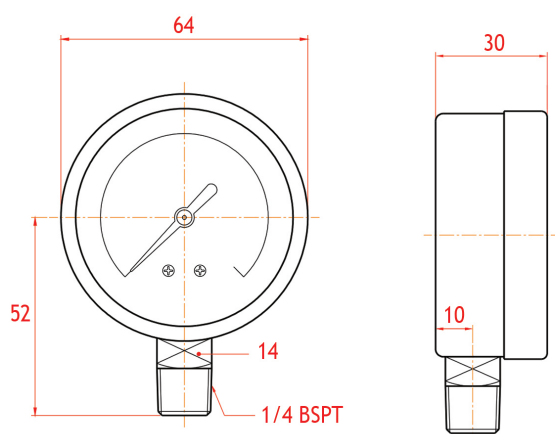


### Direct mount Rear entry

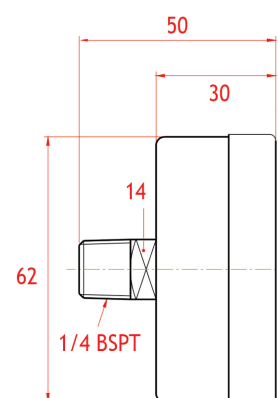


## Dimensional Data 63mm

### Direct mount Bottom entry



### Direct mount Rear entry

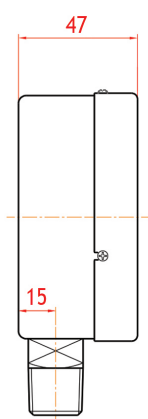
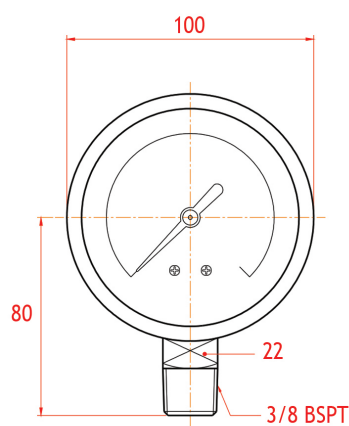


\* All measurements are in mm

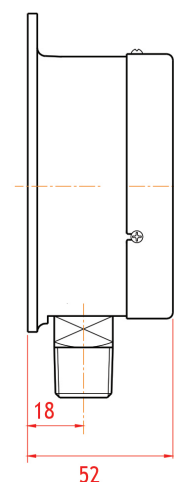
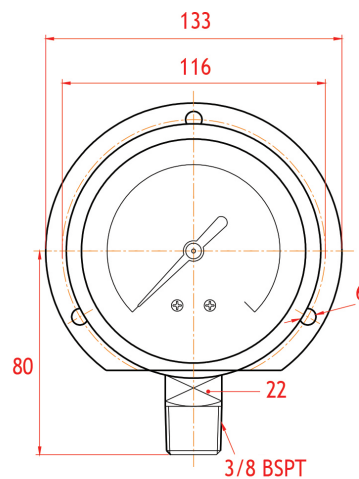


## Dimensional Data 100mm

### Direct mount Bottom entry

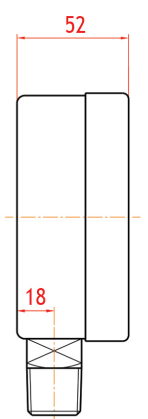
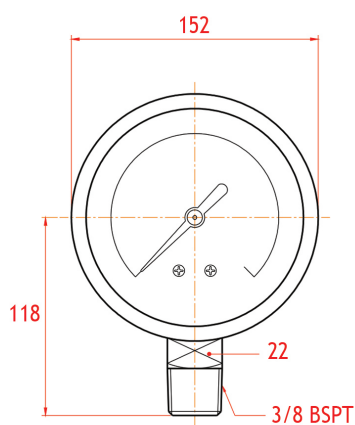


### Surface mount Bottom entry

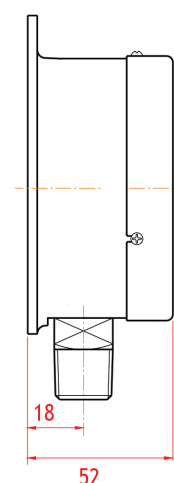
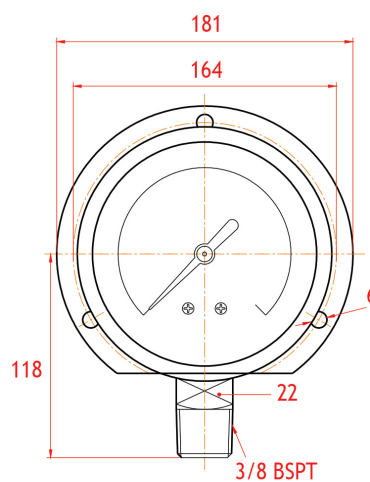


## Dimensional Data 150mm

### Direct mount Bottom entry



### Surface mount Bottom entry



\* All measurements are in mm