



# Low Pressure Capsule Gauges

## Floyd Australia's Capsule Series Pressure Gauges

are designed & manufactured for use in low pressure applications where accuracy, repeatability, and long term reliability are required. A great choice for satisfying many industrial applications and installation requirements



Floyd Australia Low Pressure Gauges are specifically designed to meet the accuracy demands of any Industrial application.

Floyd Australia's Low Pressure Gauges are specifically designed to meet the accuracy demands of any low pressure application. Suitable for all applications where accuracy, repeatability and long term stability are of importance. They can be used for air or gas within non corrosive applications and available with brass or stainless steel wetted parts.

Industrial quality ensures accuracy for indication or pressure testing usage, due to stainless steel casing with bayonet style bezel the PCX capsule gauges are suited for indoor and outdoor use. Scales are offered in standard kPa units or can be supplied in psi, bar, MHW (meter head water) kg/cm<sup>2</sup> or other, custom dials are also available with red lines, coloured bands or sectors.

## Features

- Supplied Dry
- Liquid Filling Optional for 10 - 40 kPa
- Nominal Sizes (mm) 63, 100, and 160mm
- 304 Stainless Steel Case
- IP65 Degree of Protection
- Highly Accurate
- Brass or Stainless Steel Wetted Parts

## Applications

- Medical
- Vacuum Pumps
- Leak Detection
- Airconditioning
- Gas
- Food and Beverage Industry
- Chemical and Petrochemical Industry



## Specifications

### Range

- 2.5 to 40 kPa
- Dual Scale kPa/PSI as Standard
- Can supply with Other Scales, Dual Scales, Custom Logo
- Vacuum, Compound and Pressure

### Dial

- White face with black/red printing
- Individual serial number for traceability

### Case

- Stainless steel AISI-304 case and bayonet bezel ring

### Movement

- Brass
- Stainless Steel

### Window

- Laminated Safety Glass

### Measuring Element

- Phospor Bronze
- 316 Stainless Steel

### Pointer

- Aluminum, Black

### Accuracy

- 100 and 160mm +/-1.0% of full scale
- 63mm +/-1.6% of full scale

### Neck/Thread

- 1/4 BSPT Male (NS - 63mm)
- 3/8 BSPT Male (NS - 100mm)
- 1/2 BSPT Male (NS - 160mm)

### Temperature Range

- -20°C ... +60°C (dry) - Brass
- -20c to 100°C - (dry) Stainless Steel

## Product Selection Data

Choose your product specifications and options below to configure your product

**Model**  — 
 **Size**  — 
 **Mounting**  — 
 **Wetted Parts**  — 
 **Range**  — 
 **Thread**

Model	Size	Mounting		Wetted Parts		Range	Thread	
PCX	63	A	Direct Mount / Bottom Entry	B	Brass	Specify Range	1/4	1/4 BSPT
	100		Direct Mount / Bottom Entry	S	Stainless Steel		3/8	3/8 BSPT
	160	C	Direct Mount / Lower Rear Entry				1/2	1/2 BSPT
		S	Surface Mount / Bottom Entry (Back Flange)					
		P	Panel Mount / Rear Entry (U-Clamp ixing)					
		F	Flush Mount / Rear Entry (3-Hole Front Flange)					

### Options/Accessories for PressureGauges

- Internal Thread Restrictor
- Single Electrical Contact Rise or Fall
- Reducers/Adaptors
- Perspex Windows
- Oil Filling available for scales between 10 - 40 kPa

### Customised Gauges

Floyd Australia specialises in customising gauges to customers requirements from special dial markings, red lines, coloured sectors, purpose wording or company logos.

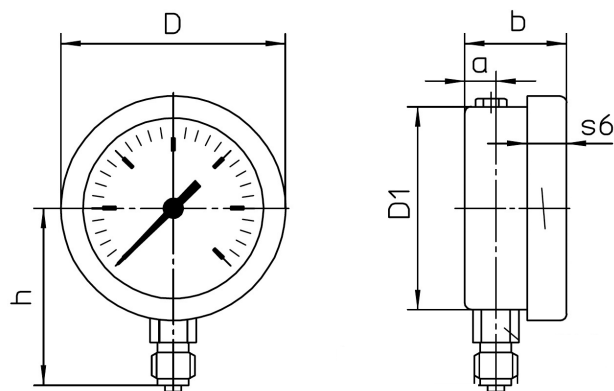
Scales can be offered in units of kPa, PSI (lb/in<sup>2</sup>), bar, mWg, ftWg, inWg, mmWg, inHg, cmHg, mmHg, KG/cm<sup>2</sup>, vacuum, dual scale and other.

Enquire today to discuss your customised gauge requirements, with one of our friendly Customer Care team members

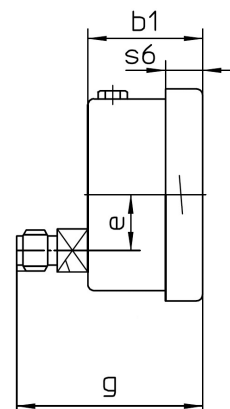


## Dimensional Data 63mm

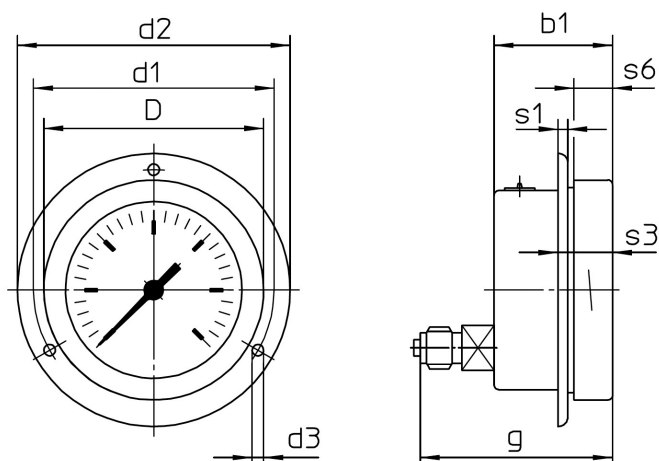
### Direct mount bottom entry



### Direct mount rear entry

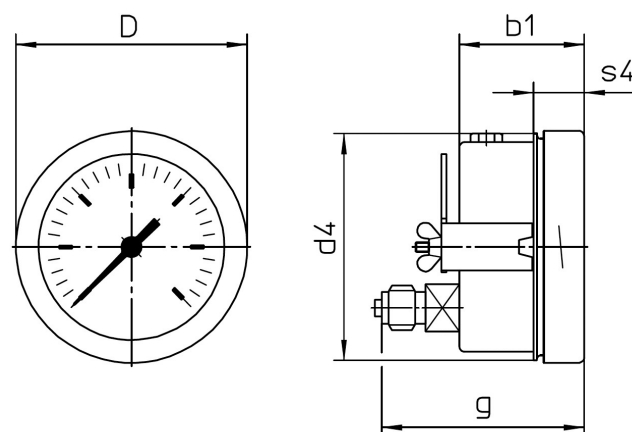


### Flush mount rear entry



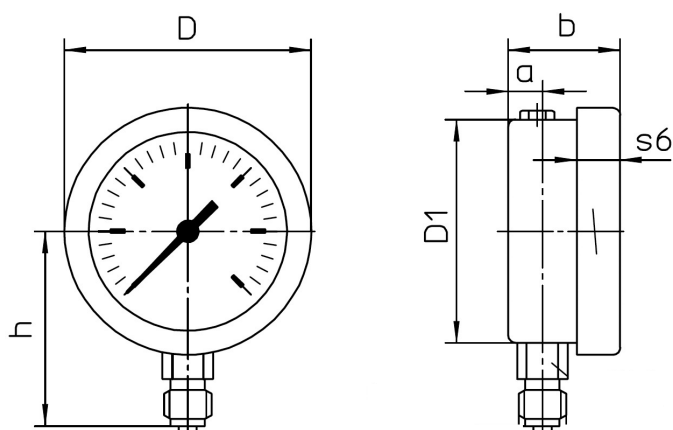
recommended panel cut out  $\varnothing 64 \pm 0.5 \text{ mm}$  (0.02")

### Panel mount rear entry



recommended panel cut-out  $\varnothing 64 \pm 0.5 \text{ mm}$  (0.02")

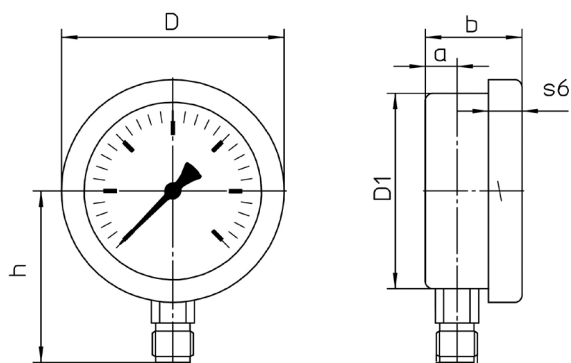
### Surface mount bottom entry



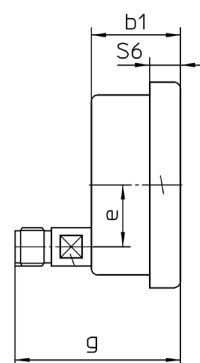


## Dimensional Data 100mm

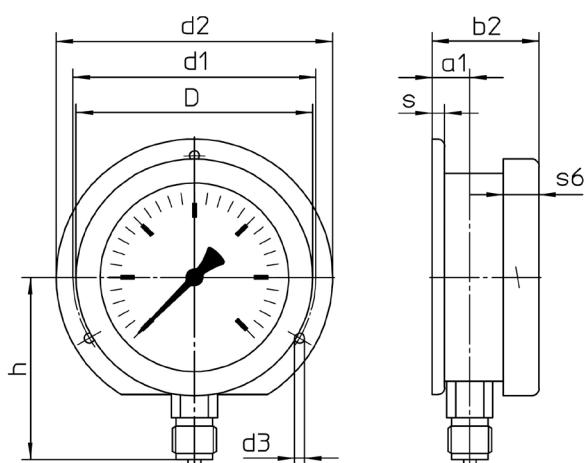
### Direct mount bottom entry



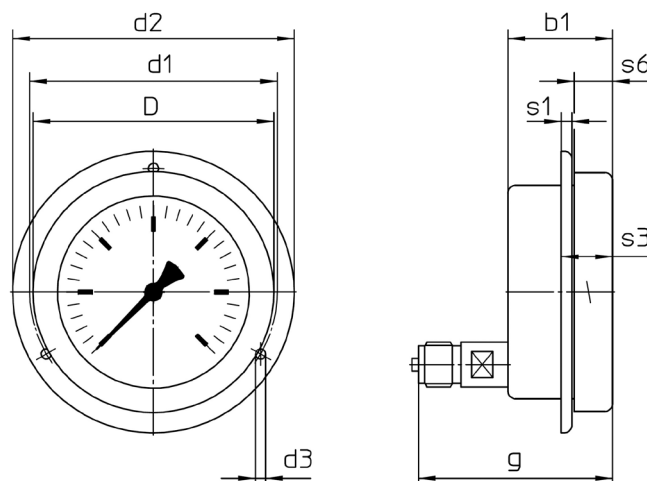
### Direct mount rear entry



### Surface mount bottom entry

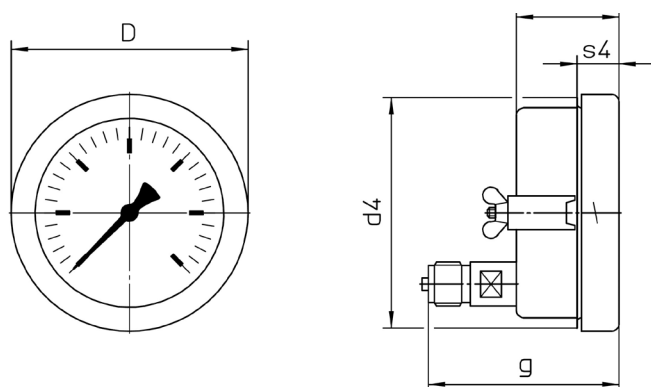


### Flush mount rear entry



recommended panel cut out for NCS 100 (4")  $\varnothing 102 \pm 0.5 \text{ mm}$  (0.02")

### Panel mount rear entry



recommended panel cut out for NCS 100 (4")  $\varnothing 102 \pm 0.5 \text{ mm}$  (0.02")

## Dimensional Data 63mm

Dimensional Data (mm / inches) and Weight (kg / lb)																				
NCS	a	a1	b	b1	b2	D	D1	d1	d2	d3	d4	e	g	h <sup>±1</sup>	s	s1	s3	s4	s6	approx weight <sup>1)</sup>
63 2½"	9.5 .37	13.5 .53	31 1.22	37 1.46	35 1.38	68.5 2.7	62 2.44	75 2.95	85 3.35	3.6 .14	67 2.64	18 .71	60 2.36	54 2.13	5 .20	3 .12	17 .67	15 .59	12 .47	0.18 .4

<sup>1)</sup> Information for version without mounting device

## Dimensional Data 100mm

Dimensional Data (mm / inches) and Weight (kg / lb)																				
NCS	a	a1	b	b1	b2	D	D1	d1	d2	d3	d4	e	g	h <sup>±1</sup>	s	s1	s3	s4	s6	approx weight <sup>1)</sup>
100 4”	16 .63	18 .71	49 1.93	49 1.93	51 2.01	113 4.45	99 3.9	116 4.57	132 5.2	4.8 .19	110 4.33	34 1.34	91 3.58	87 3.43	6 .24	4 .16	24 .94	20 .79	17 .67	0.55 1.2

<sup>1)</sup> Information for version without mounting device