

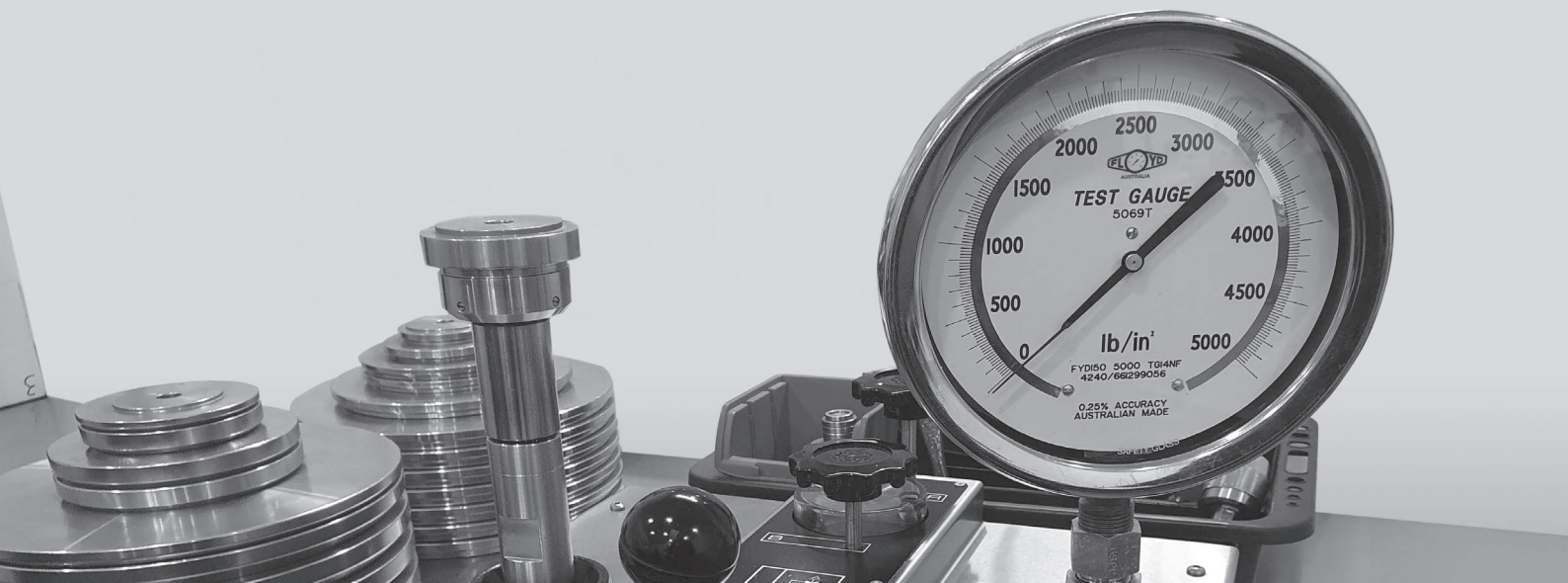
AUSTRALIA



TEST PRESSURE GAUGES

Floyd Australia pressure test gauges provide an accurate, dependable secondary pressure standard designed for use in laboratories, testing, or calibration facilities, or wherever accuracy and repeatability are of prime importance.





Floyd Australia precision test gauges are manufactured to the highest standard in quality. Used for the testing of industrial gauges or equipment of that standard. For quality control testing requirements it is not always necessary to use a primary standard such as a dead weight tester, therefore a secondary standard such as a test gauge can be used, being a more convenient and economical method of testing.

Following the Australian Standards, a test gauge's level of accuracy must be suitable for calibrating industrial gauges to be considered a test gauge. Generally, the preferred industry nominal sizes of a test gauge are 150, 200, and 250 mm, but the acceptable must not be less than 150 mm to ensure the accuracy level of data that will be extracted. Although test gauges have finer division than industrial gauges, the scale interval should not be less than 0.2 percent of the maximum scale value. The distance between neighboring scale lines must be at least 1mm. The primary scale lines will be numbered, and the lengths of the intermediate lines will be adjusted to make reading easier.

Specifications

Measuring Element

- Copper / Beryllium

Window

- Laminated safety glass

Temperature Range

- Ambient: -20°C ... +60°C (dry)
- Process: +100°C maximum

Accuracy

- $\pm 0.25\%$ of full span

Pointer

- Aluminum, black

Case

- Stainless steel AISI-304 case & bayonet bezel ring

Range

- Vacuum -100 -0 kPa up to 100,000 kPa
- Also available in other pressure units
- Can supply with Other Scales, Custom Logo

Movement

- Stainless steel AISI-304 with min. needle stop

Dial

- Mirror to reduce anti parallax error
- Black figures on white

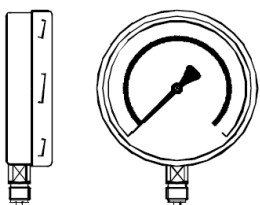
Neck/Thread

- Standard 1/2 BSPP
- 1/2 BSPT Male / Stainless Steel AISI-316 (NS - 150mm) Includes internal thread to mount restrictor screw for pulsation damping

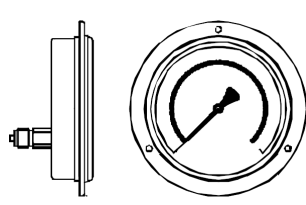
Features

- Supplied Dry
- Superior resistance to Shock
- Stainless Steel Case & Bezel
- Nominal sizes (mm) 150
- IP65 Degree of protection
- Highly Accurate

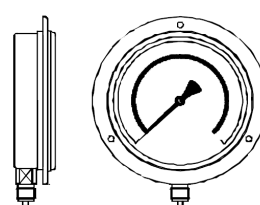
Mounting Types



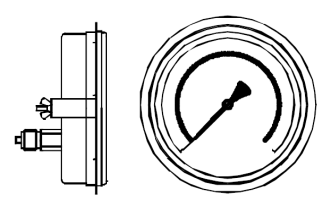
Direct mount bottom entry



Flush mount rear entry



Surface mount bottom entry



Panel mount rear entry

Product Selection Data

Choose your product specifications and options below to configure your product



Model	NS	Mounting		Wetted Parts		Range		Thread	
PBX-TG	160	A	Direct mount bottom entry	S	Stainless Steel	01	-100 -0 kPa	1/2P	BSPP
		S	Surface mount bottom entry(Back Flange)			02	-100 -0-60 kPa		
		P	Panel Mount rear entry "U" Clamp fixing			03	-100 -0-150 kPa		
		F	Flush Mount rear entry "3"hole fixing front flange			04	-100 -0-300 kPa		
		05	-100 -0-500 kPa						
		06	-100 -0-900 kPa						
		07	-100 -0-1600 kPa						
		09	0 - 100 kPa						
		10	0 - 160 kPa						
		11	0 -250 kPa						
		12	0 - 400 kPa						
		13	0 - 600 kPa						
14	0 - 800 kPa								
15	0 - 1000 kPa								
16	0 - 1600 kPa								
17	0 - 2500 kPa								
18	0 - 4000 kPa								
19	0 - 6000 kPa								
20	0 - 8000 kPa								
21	0 - 10000 kPa								
22	0 - 16000 kPa								
23	0 - 25000 kPa								
24	0 - 40000 kPa								

Customised Gauges

Floyd Australia specialises in customising gauges to customers' requirements from special dial markings, red lines, coloured sectors, purpose wording or company logos.

Scales can be offered in units of kPa, PSI (lb/in²), bar, mWg, ftWg, inWg, mmWg, inHg, cmHg, mmHg, KG/cm², KN, Ton, Tonne, refrigerant, ammonia, vacuum, dual scale and other.

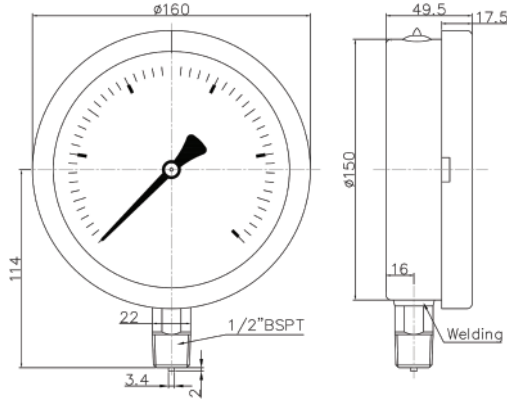
Enquire today to discuss your customized gauge requirements, with one of our friendly Customer Care team members

Test Report & NATA Certification

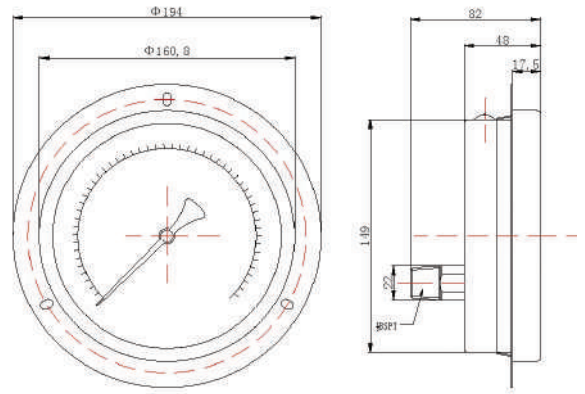
- Test report is suitable when calibration is performed on equipment that is used for indication purposes only and does not require the reporting of the uncertainty of measurement. The reference Test Gauge would have been certified by a NATA accredited Laboratory within the past 12 months and be 4x more accurate than the gauge being evaluated. The Test Report will make reference to the Test Gauge's calibration certificate.
- NATA Certification is when a gauge is certified by a NATA accredited laboratory. All uncertainties of the measurements performed are reported within the NATA calibration report. Instruments should be certified by a NATA accredited laboratory if they are going to be used as references for any other instruments.

Dimensional Data 160mm

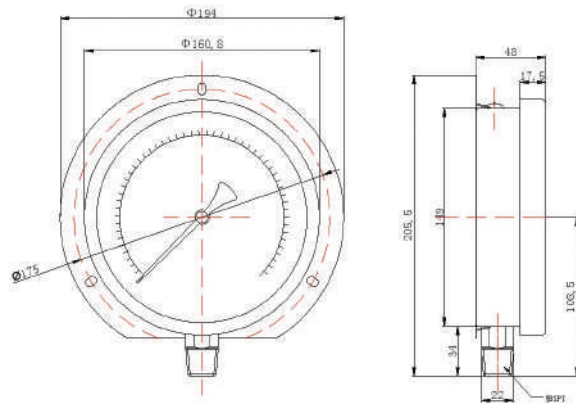
Direct mount bottom entry



Flush mount rear entry



Surface mount bottom entry



Panel mount rear entry

