



Refrigeration & HVAC Pressure Gauges

Our Range of Quality Refrigeration Pressure Gauges

Offers the ultimate protection and flexibility required for your measuring instruments

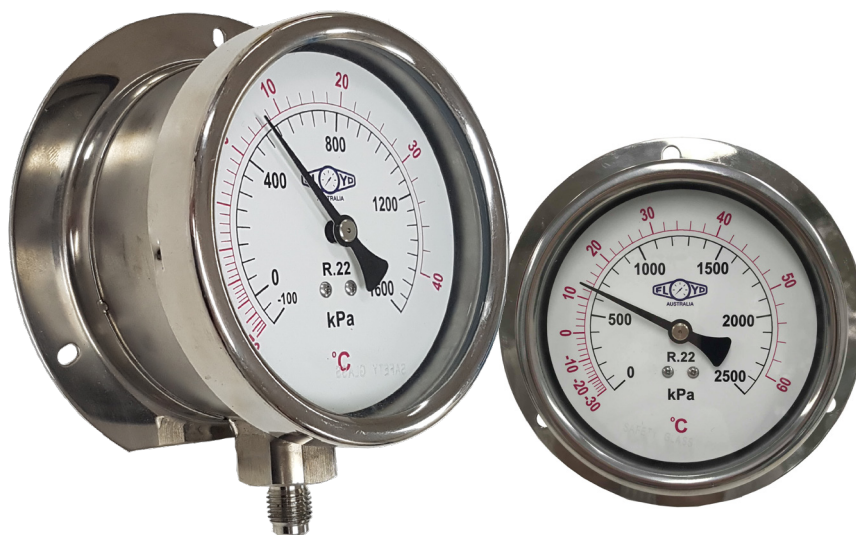


Our ASG General Purpose Series of Refrigeration pressure gauges offers superior quality & performance at an affordable price

The ASG Series of Refrigeration gauges guarantees long life & durability for indoor, outdoor and harsh environmental conditions. The ASG range is designed & manufactured to minimize failure and to protect personnel and property, with an emphasis on maintaining quality and accuracy within a refrigeration gauge. With its full stainless steel construction the ASG range is ideal for resisting chemical, weather or corrosion effects, & can be supplied dry or liquid filled when protection is required against pulsation and or vibration.

Features

- Supplied Liquid Filled or Dry
 - Superior resistance to Shock
 - Stainless Steel Case & Bezel
 - Stainless Steel wetted parts
-
- Nominal sizes (mm) 63 and 100.
 - IP65 Degree of protection
 - Highly Accurate



Specifications

Range

- -100 kPa to 0-4000 kPa
- Dual scale as Standard
- Can supply with Other Scales,
- Custom Logo available upon request

Measuring Element

- Bourdon tube – Stainless Steel AISI316

Accuracy

- $\pm 1.0\%$ of full scale (NS 100 & 150mm)
- $\pm -3\%$ of full scale (NS 63mm)

Case

- Stainless steel AISI-304 case & bayonet bezel ring
- Individual serial number for traceability

Window

- Laminated safety glass

Temperature Range

- Ambient: -20°C ... $+60^{\circ}\text{C}$ (dry)
- Process: $+100^{\circ}\text{C}$ maximum

Neck/Thread

- 1/4 flare Male
- Includes internal thread to mount restrictor screw for pulsation dampening

Movement

- Stainless steel AISI304

Pointer

- Aluminum, black

Dial

- Aluminum White face with black & red printing

Product Selection Data

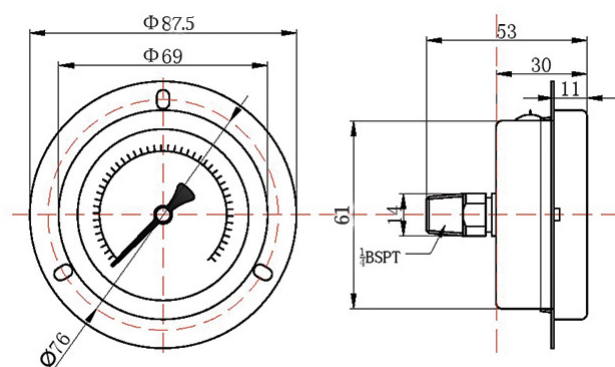
Choose your product specifications and options below to configure your product

Model —
 Diameter —
 Mounting —
 Wetted Parts —
 Range —
 Thread —
 Oil Fill —
 Refrig

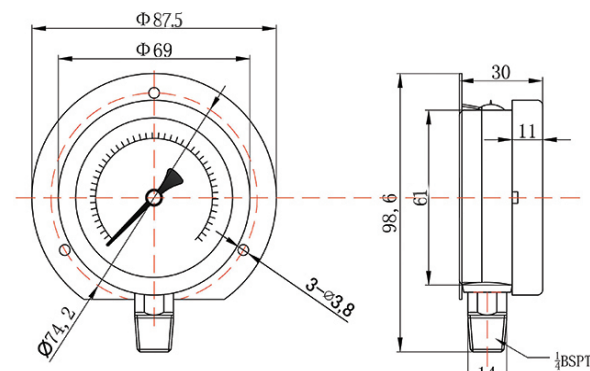
Model	Size	Mounting		Wetted Parts		Range		Thread		Oil Fill	Refrig
ASG	63	S	Surface Mount / Bottom Entry (Back Flange)	S	316 Stainless Steel	06	-100-0-900kPa	1/4F	1/4 Flare	OF	R22
	100					29	-100-0-1000kPa			Dry	R134a
						07	-100-0-1600kPa				R404a
	F	Flush Mount / Rear Entry (3-Hole Front Flange)	15			0-1000kPa	R407c				
			16			0-1600kPa	R717				
			17			0-2500kPa	OIL				
			30			0-3000kPa	...				
			18			0-4000kPa					

Dimensional Data 63mm

Flush mount rear entry

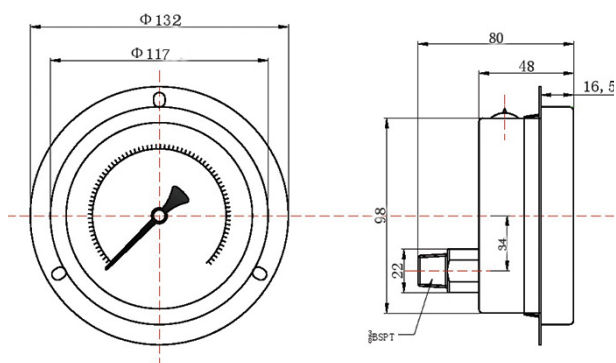


Surface mount bottom entry



Dimensional Data 100mm

Flush mount rear entry



Surface mount bottom entry

